



# AeroMate™

## Wireless 4x Switch Sensor

### FEATURES:

- **Easy Hook-Up**  
removable terminal block
- **Switch Sharing**  
multiple receivers
- **Versatile Outputs**  
30 Vdc @ 2 Amperes
- **Long Range**  
500 feet LOS
- **Intrinsically Safe**  
Class I Group C and D
- **Affordable Price**  
fits any budget
- **Rugged and Durable**  
shatter proof solar panel

### APPLICATIONS:

- **Pressure Switches**
- **DP Switches**
- **Limit Switches**
- **Plunger Sensors**
- **Tank Full Switches**
- **Temperature Switches**
- **Electrical Relay Control**
- **Motor Valve Control**
- **Well Head Controllers**
- **Automation Systems**
- **Processing Plants**

### Wireless ...

switch sensor includes a transmitter and receiver that eliminates costly, troublesome cabling between switch sensor, control equipment and controlled devices such as electrical relays and pneumatic solenoid valves.

### Quick Installation ...

saves time and money with a simple three step process. Remove AeroMate cover panel and pull out the battery activation tab to activate solar charging. Unplug the removable switch connector block. Make switch connections to the screw terminals and re-plug the connection block back into the AeroMate. It's that simple.

### Versatile Inputs ...

allow up to four common ground switch inputs that tolerate the high switch resistances associated with contact oxidation and poor connections. Each switch input accepts input voltages up to +30 Vdc and includes 15 kV static and electric discharge protection.

### Robust Outputs ...

can switch high power loads up to +30 Vdc at 2 Amperes of current. With the four isolated electronic switch outputs, mixed high power control and low voltage, common ground logic applications are easily accommodated.

### Expandable ...

configurations allow sharing a single 4x switch transmitter with multiple 4x receivers. Jumper selectable unit addresses provide for up to 16 transmitter/receiver pairs operating in the same vicinity without interference or cross talk.



## Wireless Switch Sensing

**Share switch sensors  
with multiple receivers.**

### Flexible Power ...

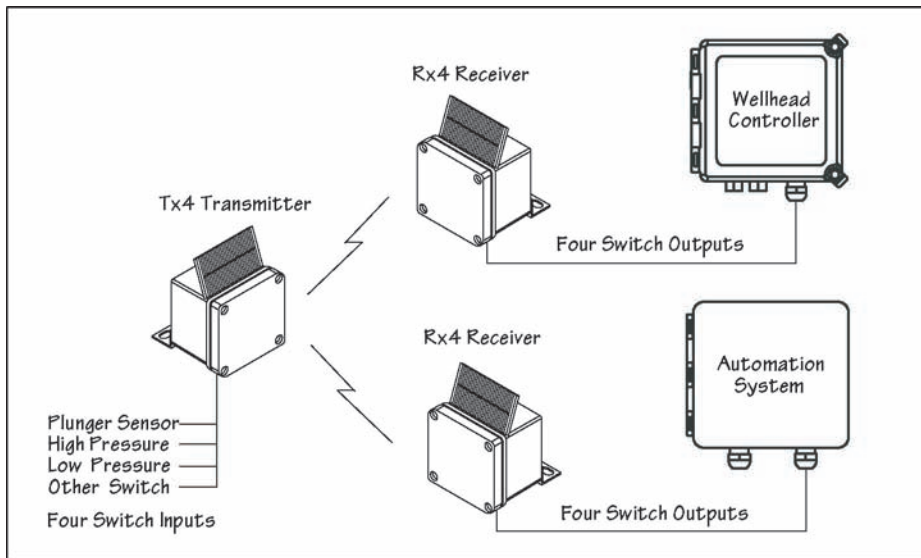
starts with the patented SunSmart® solar power system that uses rechargeable Nimh batteries or external +3.6 Vdc to +24 Vdc power sources. An externally accessible power jack allows hook-up to external power sources and solar panels for all weather operation in remote geographic locations.

### Reliable ...

long term performance comes from 20 years experience in designing portable, battery operated systems for harsh, industrial and remote, outdoor environments. Low power operation and rugged packaging combine to provide a high level of field reliability.

# OKC Products®

*"Unleashing the power of technology."*



A single AeroMate™ Tx4 transmitter can share four switch sensors with one or more Rx4 receivers across hazardous location zones with a 500 foot plus signal range.

**SPECIFICATIONS:**

**AEROMATE Tx4 TRANSMITTER**

**Enclosure:**

Weight 2 pounds (0.9 kg)  
 Dimensions 3.5"W x 4.0"H x 4.0"D  
 9 W x 10 H x 10 D (cm)  
 Type Non-Metal  
 NEMA 4X, 12 & 13

**Power:**

Standard 2 x AA Cell Battery Holder  
 Rechargeable Nimh Cells  
 Capacity 1250 mA-Hr @ 2.4 Vdc  
 Drain 3 mW Average Power  
 External With Batteries Removed:  
 3.6 - 24.0 Vdc @ 10 mW

**Transmitter:**

Frequency 418 mHz  
 Power +4 dBm  
 Range 500 ft. LOS

**Inputs:**

Type Removable screw block  
 8-Terminal #18-24 AWG

Hook-Up Input Ground  
 1 - S1+ 2 - S1-  
 3 - S2+ 4 - S2-  
 5 - S3+ 6 - S3-  
 7 - S4+ 8 - S4-

Electrical 0 - 30 Vdc  
 Common Ground  
 Open: Logic 1  
 Closed: Logic 0

**AEROMATE Rx4 RECEIVER**

**Enclosure:**

Weight 2 pounds (0.9 kg)  
 Dimensions 3.5"W x 4.0"H x 4.0"D  
 9 W x 10 H x 10 D (cm)  
 Type Non-Metal  
 NEMA 4X, 12 & 13

**Power:**

Standard 3 x AA Cell Battery Holder  
 Rechargeable Nimh Cells  
 Capacity 1250 mA-Hr @ 3.6 Vdc  
 Drain 32 mW Average Power  
 External With Batteries Removed:  
 4.5 - 24.0 Vdc @ 10 mW

**Transmitter:**

Frequency 418 mHz  
 Power -112 dBm  
 Range 500 ft. LOS

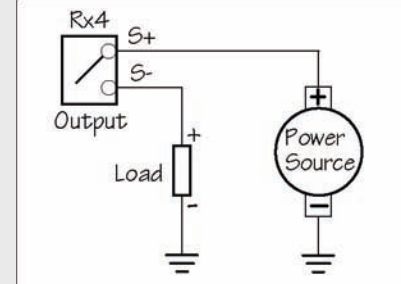
**Inputs:**

Type Removable screw block  
 8-Terminal #18-24 AWG

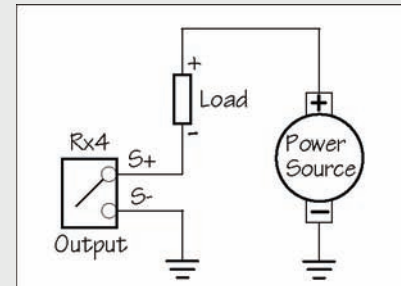
Hook-Up Outputs  
 1 - S1+ 2 - S1-  
 3 - S2+ 4 - S2-  
 5 - S3+ 6 - S3-  
 7 - S4+ 8 - S4-

Electrical 0 - 30 Vdc @ 2 Amperes  
 Isolated Ground  
 Open: Open Circuit  
 Closed: Short Circuit

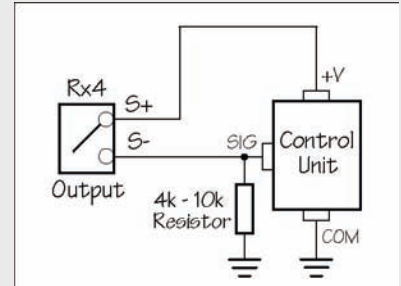
**High-Side Power Switch**



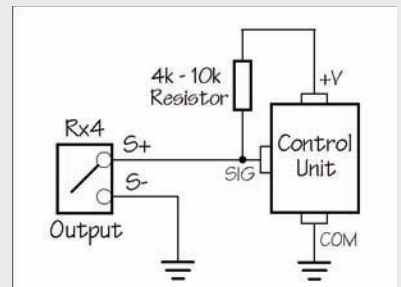
**Low-Side Power Switch**



**Normally Low Switch**



**Normally High Switch**



**OKC Products**  
 INCORPORATED

P.O. Box 1560, 585 N. 1st Street  
 Berthoud, CO 80513 USA

Tel. 800-783-3234

Fax 970-532-1776

www.okcproducts.com