



TripMate™

Strap-On Plunger Arrival Sensor

FEATURES:

- **Easy Installation**
strap-on hold down
- **Small Package Size**
narrow body case
- **Easy Hook Up**
2-wire terminals
- **MagCharge™ Powered**
long battery life
- **Deep Penetrating**
high strength magnet
- **Long Term Reliability**
epoxy sealed unit
- **High Powered Switch**
30 volts at 2 amperes
- **Intrinsically Safe**
CSA approved
- **Resists Chemicals**
Carefree Operation

APPLICATIONS:

- **Plunger/Gas Lift**
- **Stroke Counter**
- **Proximity Sensing**
- **Automation Sensor**
- **Piston Timing**
- **Tank Level Control**
- **Plunger Arrival**
- **Magnetic Shut-Off**

Magnetic Induction ...

Switch penetrates through metal and non-metal materials to sense metal objects moving past the switch. Rugged and durable, the TripMate magnetic shut-off switch is the perfect solution for industrial applications that require plunger arrival sensing, piston stroke counting or tank level gaging..

Simple Installation ...

Saves time and money. The TripMate's narrow body package fits into those hard to get to places. A UV resistant rubber hold-down secures the TripMate to the well head pipe. Connect to the switch screw terminals to complete a simple, two-step installation.

Self Powered ...

With internal lithium batteries, the TripMate provides long term operation in all weather extremes and eliminates the need for an external power source. The TripMate's proprietary Mag Charge power system generates and stores power to extend battery life with every magnetic sensing event. The harder it works, the longer it lasts.

Ideal Switch ...

Configuration allows both high-side and low-side power switching for latching pneumatic valve and electrical relay control. Electrical isolation between internal sensing circuits and switch terminals provides ideal, low loss switch for low voltage, pull-down and pull-up control signal applications. A high current switch rating, low on resistance, and electrical isolation combine to provide an extremely versatile arrival switch, meeting a wide range of industrial control applications.



MagCharge™
Powered

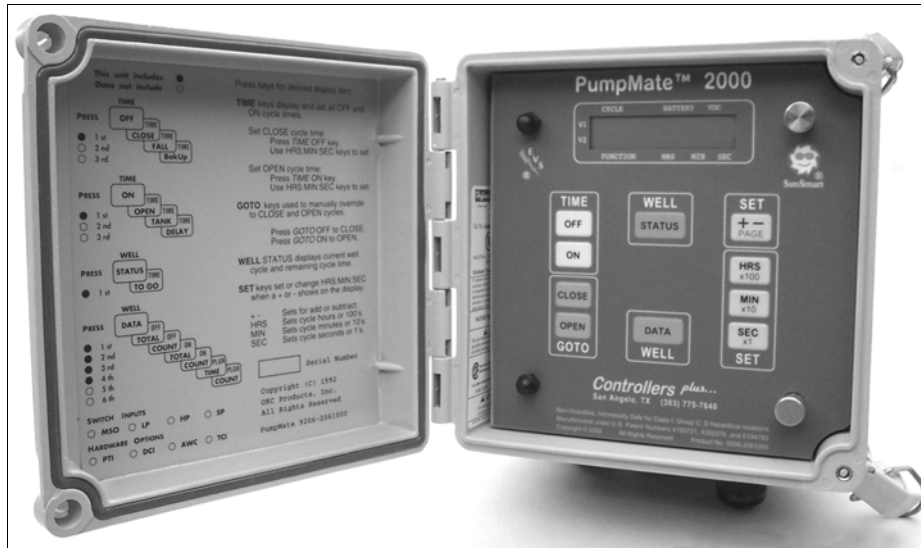
Long term, carefree operation

Carefree Operation ...

And long term reliability set the TripMate apart from other magnetic switches. Impermeable epoxy sealing and electrically isolated switch connections protect against harsh weather and lightning. Ultra low power electronics significantly reduce failure rates and provide intrinsically safe operation. Rugged packaging is made to last and give years of continuous performance in harsh weather conditions. The TripMate's chemical resistant, molded enclosure keeps the TripMate looking new even after years of oilfield service.

OKC Products®

"Turning good ideas into great controllers."



With its universal 2-wire hook-up, the TripMate™ is compatible with most popular well head controllers, including the TimeMate 2000 and the PumpMate 2000 shown above.

TripMate™ SPECIFICATIONS:

Enclosure:

Weight	8 ounces (0.23 kg)
Dimensions	2.4"W x 1.4"H x 1.3"D (6.1cm W x 3.6cm H x 3.3cm D)
Type	High impact, black molded thermoplastic

Power:

Type	Internal, sealed lithium battery
Recharge	Inductive MagCharge™ power conversion
Life	7 years or more

Hook-Up:

Type	Two-wire switch 1. Signal (+) 2. Ground (-)
Terminals	#6-32 stainless steel w/ spade lugs provided

Cable	#22 AWG 2-conductor. 500 ft. maximum length. 6 ft. black molded cable provided with a white signal (+) wire marker.
-------	---

Electrical:

Output	Normally open, single pole, electrically isolated switch
Rating	30 Volts @ 2 Amps. Less than 0.1 ohm on resistance

Operational:

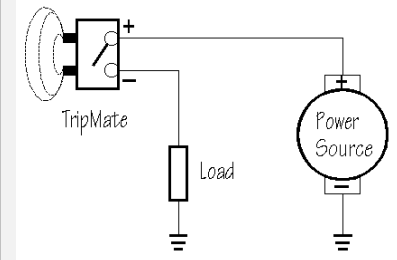
Method	Utilizes magnetic induction to sense metal object moving past sensor through metal or non-metal interfaces.
Signal	Switch closure duration proportional to speed of passing object.
Mounting	Physical contact with sensing interface. Hold down using clamp, cable tie, or rubber o-ring band.

Certifications:

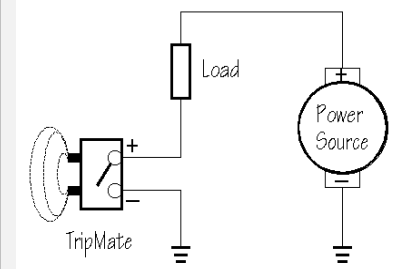
CSA	Non-Incendive Intrinsically Safe for Class I Groups C and D Hazardous Locations
-----	---

© Copyright 1998-2003 OKC Products, Inc. All Rights Reserved.

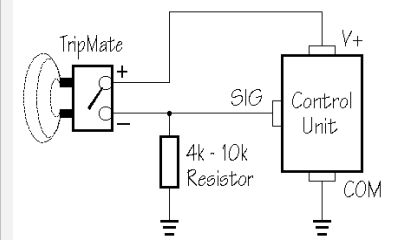
High-Side Power Switch



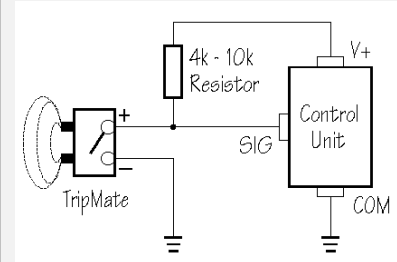
Low-Side Power Switch



Pull-Down Control Signal



Pull-Up Control Signal



OKC Products

INCORPORATED

P.O. Box 1560, 858 N. 1st Street
Berthoud, CO 80513

Tel: 800-783-3234
Fax: 970-532-1776
www.okcproducts.com